



PARTS MANUAL

Indoor Unit

MODELS:

FLEXX24HP230V1AH
FLEXX36HP230V1AH
FLEXX48HP230V1AH
FLEXX60HP230V1AH

Outdoor Unit

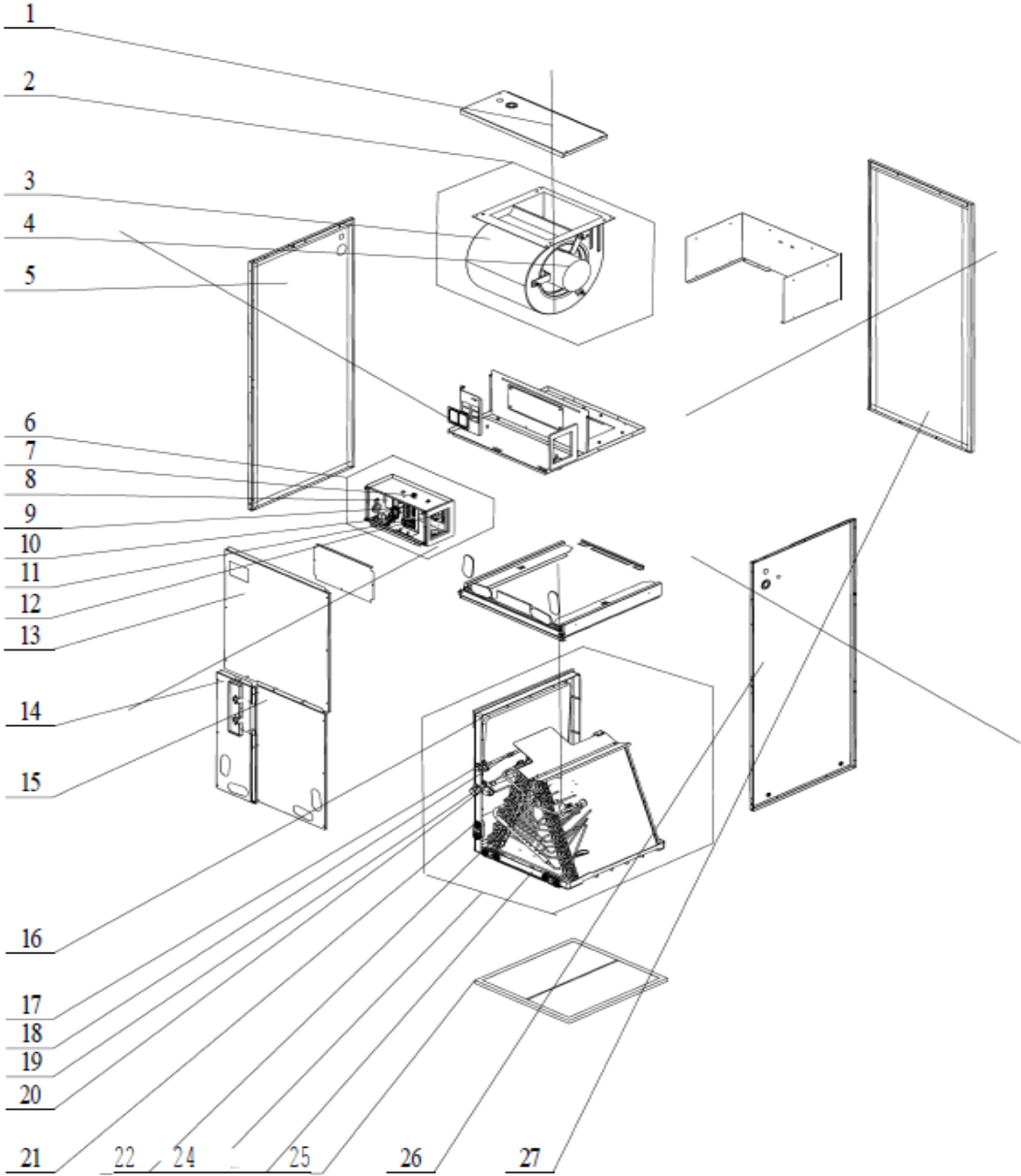
MODELS:

FLEXX36HP230V1AO
FLEXX60HP230V1AO

Thank you for choosing our product.
Please read this Installation & Owner's Manual carefully before
operation and retain it for future reference.

If you lose this Manual, please contact your local distributor or
visit www.greecomcomfort.com/resources now to download and
file the electronic version.

FLEXX24HP230V1AH
FLEXX36HP230V1AH



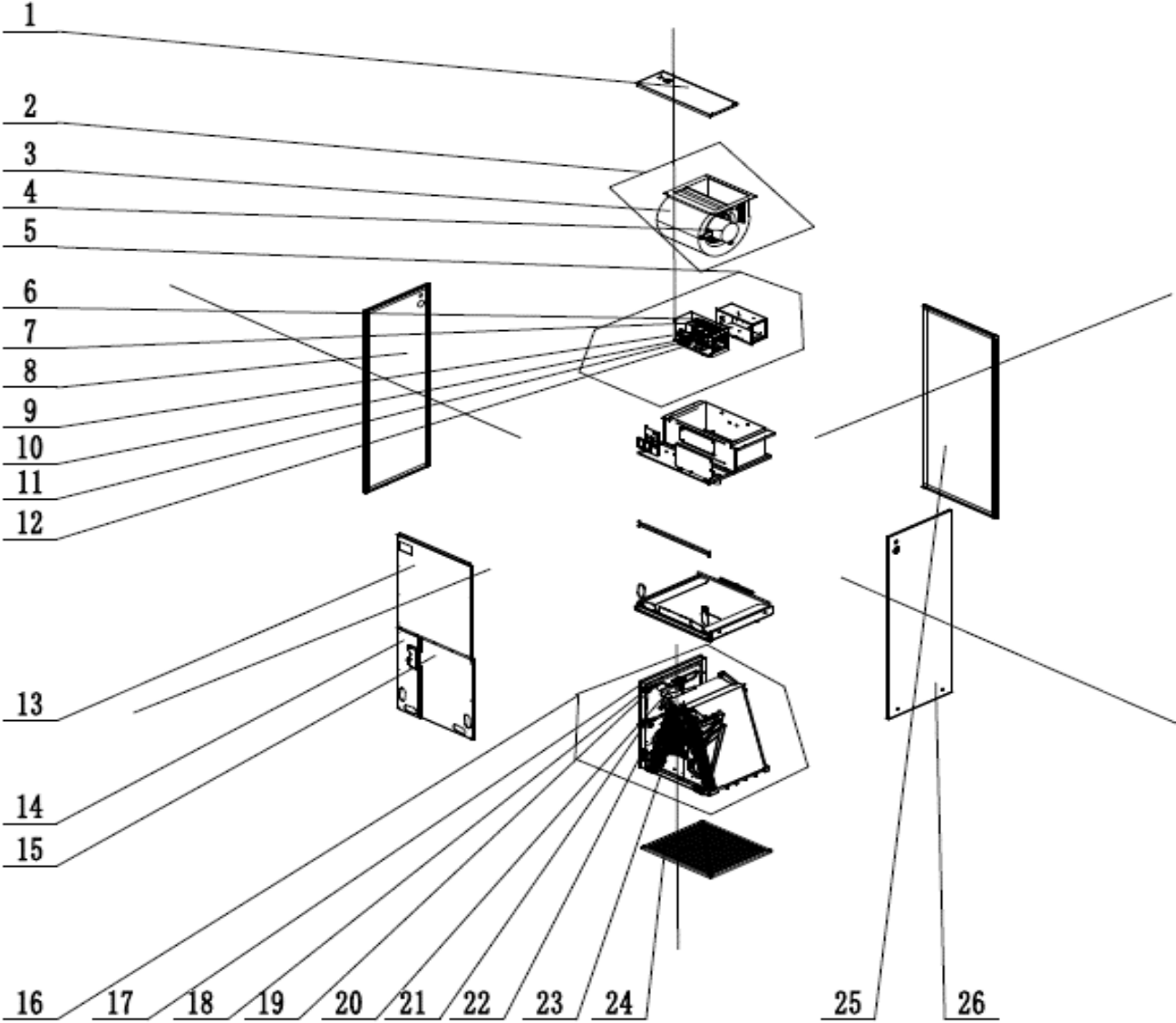
FLEXX24HP230V1AH

Item No.	Description	Part Number	Qty.
1	Top Cover Sub-Assy	000051060106	1
2	Centrifugal fan assy	000052000072	1
3	Centrifugal Fan Housing	1570220201	1
4	Motor for Centrifugal Fan	150104000014	1
5	Right Side Plate	012056060205P	1
6	Electric Box Assy	100002067711	1
7	Terminal Board	420111147	1
8	Transformer	43110286	1
9	Terminal Board	4201025502	1
10	Pinboard	300023060013	1
11	Terminal Board	42000100000102	1
12	Main Board	30221901	1
13	Top Cover Board Sub-assy	01262200019	1
14	Bottom Cover Plate Assy	000133060018	1
15	Bottom Cover Plate Assy	000133060017	1
16	Water Tray	2690220501	1
17	Cut off Valve	071302391	1
18	Strainer	0721200102	2
19	Cut off Valve	070001000009	1
20	Thermal Expansion Valve	071017060022	1
21	Choke Plug	76718209	8
22	Evaporator Assy	011001061481	1
23	Water Tray Assy	000069060335	1
24	Water Tray	2690220401	1
25	Filter Sub-Assy	111001060160	1
26	Left Side Plate Sub-Assy	01312200015	1
27	Rear Side Plate Sub-Assy	01312200019	1

FLEXX36HP230V1AH

Item No.	Description	Part Number	Qty.
1	Top Cover Sub-Assy	000051060106	1
2	Centrifugal fan assy	000052000072	1
3	Centrifugal Fan Housing	1570220201	1
4	Motor for Centrifugal Fan	150104000014	1
5	Right Side Plate	012056060205P	1
6	Electric Box Assy	100002067711	1
7	Terminal Board	42011147	1
8	Transformer	43110286	1
9	Terminal Board	4201025502	1
10	Pinboard	300023060013	1
11	Terminal Board	42000100000102	1
12	Main Board	30221901	1
13	Top Cover Board Sub-assy	01262200019	1
14	Bottom Cover Plate Assy	000133060018	1
15	Bottom Cover Plate Assy	000133060017	1
16	Water Tray	2690220501	1
17	Cut off Valve	071302391	1
18	Strainer	0721200102	2
19	Cut off Valve	070001000009	1
20	Thermal Expansion Valve	071017060022	1
21	Choke Plug	76718209	8
22	Evaporator Assy	011001061481	1
23	Water Tray Assy	000069060335	1
24	Water Tray	2690220401	1
25	Filter Sub-Assy	111001060160	1
26	Left Side Plate Sub-Assy	01312200015	1
27	Rear Side Plate Sub-Assy	01312200019	1

FLEXX48HP230V1AH
FLEXX60HP230V1AH



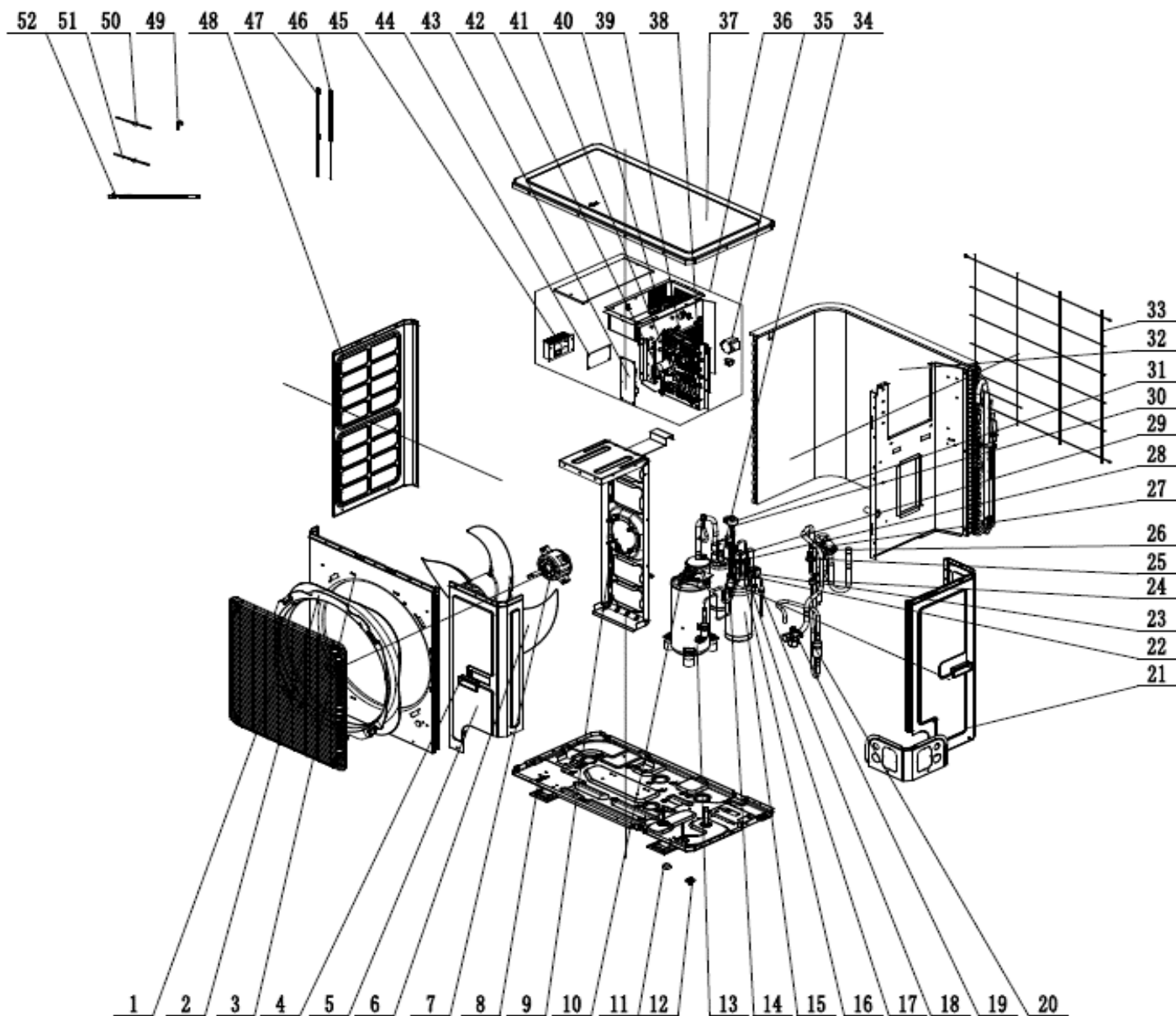
FLEXX48HP230V1AH

Item No.	Description	Part Number	Qty.
1	Top Cover Plate Sub-Assy	011657060272	1
2	Centrifugal fan assy	000052000073	1
3	Centrifugal Fan Housing	1570220301	1
4	Motor for Centrifugal Fan	150104000013	1
5	Electric Box Assy	100002067711	1
6	Terminal Board	42011147	1
7	Transformer	43110286	1
8	Left Side Plate Sub-Assy	017037060170	1
9	Main Board	30221901	1
10	Terminal Board	4201025502	1
11	Pinboard	300023060013	1
12	Terminal Board	42000100000102	1
13	Top Cover Board Sub-assy	017011060115	1
14	Bottom Cover Plate Assy	000133060028	1
15	Bottom Cover Plate Assy	000133060017	1
16	Evaporator Assy	011001061315	1
17	Water Tray	2690220501	1
18	Cut off Valve	071302391	1
19	Strainer	0721200102	3
20	Thermal Expansion Valve	071017060028	1
21	Cut off Valve	070001000009	1
22	Choke Plug	76718209	8
23	Water Tray	2690220601	1
24	Filter Sub-Assy	111001060188	1
25	Rear Side Plate Sub-Assy	017051060118	1
26	Right Side Plate Sub-Assy	000130060099	1

FLEXX60HP230V1AH

Item No.	Description	Part Number	Qty.
1	Top Cover Plate Sub-Assy	011657060272	1
2	Centrifugal fan assy	000052000073	1
3	Centrifugal Fan Housing	1570220301	1
4	Motor for Centrifugal Fan	150104000013	1
5	Electric Box Assy	100002067711	1
6	Terminal Board	42011147	1
7	Transformer	43110286	1
8	Left Side Plate Sub-Assy	017037060170	1
9	Main Board	30221901	1
10	Terminal Board	4201025502	1
11	Pinboard	300023060013	1
12	Terminal Board	42000100000102	1
13	Top Cover Board Sub-assy	017011060115	1
14	Bottom Cover Plate Assy	000133060028	1
15	Bottom Cover Plate Assy	000133060017	1
16	Evaporator Assy	011001061315	1
17	Water Tray	2690220501	1
18	Cut off Valve	071302391	1
19	Strainer	0721200102	3
20	Thermal Expansion Valve	071017060028	1
21	Cut off Valve	070001000009	1
22	Choke Plug	76718209	8
23	Water Tray	2690220601	1
24	Filter Sub-Assy	111001060188	1
25	Rear Side Plate Sub-Assy	017051060118	1
26	Right Side Plate Sub-Assy	000130060099	1

FLEXX36HP230V1AO



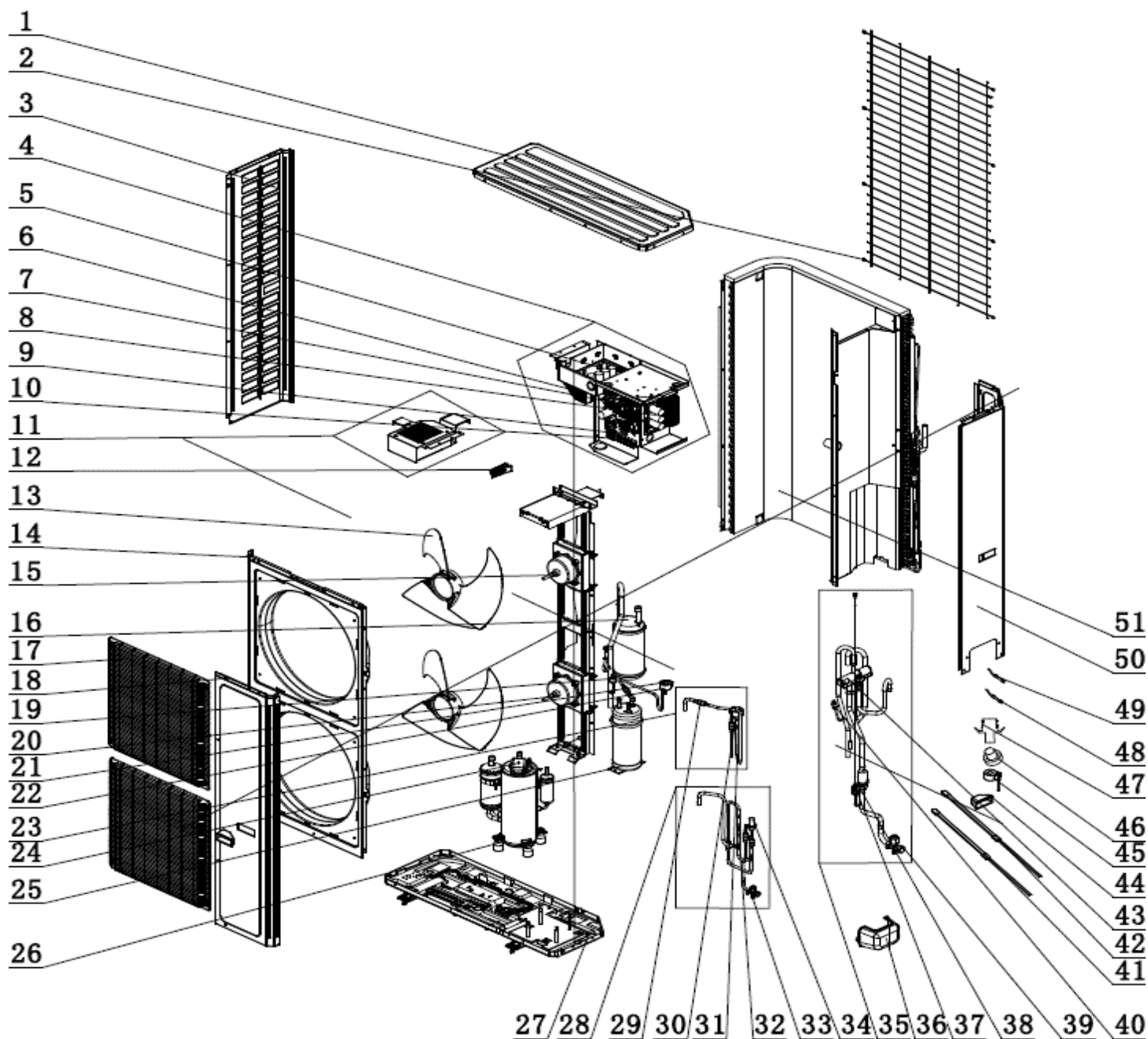
FLEXX36HP230V1AO

Item No.	Description	Part Number	Qty.
1	Front Grill	0157280000301	1
2	Diversion Circle	10474100003	1
3	Cabinet	012022000003P03	1
4	Handle	2690410001603	2
5	Front Side Plate	012050000007P03	1
6	Axial Flow Fan	1043410000801	1
7	Brushless DC Motor	150104060013	1
8	Chassis Sub-Assy	01700006008907P	1
9	Motor Support Sub-Assy	01701206003901	1
10	Cut off Valve	071302391	1
11	Drainage hole Cap	76715005	3
12	Drainage Joint	26113009	1
13	Compressor and Fittings	009001060125	1
14	Strainer	0721004501	2
15	Accumulator	035029000003	1
16	Electromagnetic Valve	43003091	1
17	Magnet Coil (electromagnetic valve)	43040004114	1
18	Strainer	0721304401	1
19	Cut off Valve	07330000001	1
20	Silencer	07245012	1
21	Rear Side Plate	012076000021P03	1
22	Electronic Expansion Valve	43005017	1
23	Electric Expand Valve Fitting	4300034404	1
24	Pressure Protect Switch	4602000603	1
25	Pressure Sensor	43004400001501	1
26	4-way Valve	4300008201	1
27	Filter	07224803	1
28	Filter	07216221	2
29	One Way Valve	07133618	1

FLEXX36HP230V1AO

30	Electronic Expansion Valve	43005017	1
31	Electric Expand Valve Fitting	07200206002313	1
32	Condenser Assy	01100206019001	1
33	Rear Grill	0157410001402	1
34	Gas-liquid Separator	07223048	1
35	Inductance	43128000014	1
36	Electric Box Assy	100002065509	1
37	Coping	01264100052P03	1
38	Main Board	300027060524	1
39	Main Board	300027060636	1
40	PFC Inductance	43120011	1
41	Terminal Board	4201025504	1
42	Terminal Board	422000000015	1
43	Filter Board	300020060028	1
44	Power Switch	300012060016	1
45	Radiator	430034000048	1
46	Electrical Heater (Chassis)	7651000425	1
47	Electrical Heater(Compressor)	7651521238	1
48	Left Side Plate	012055000007P03	1
49	4 Way Valve Coil	43000400122	1
50	Temperature Sensor	3900007208	1
51	Temperature Sensor	3900800004905G	1

FLEXX60HP230V1AO



FEXX60HP230V1AO

Item No.	Description	Part Number	Qty.
1	Front Grill	0157280000301	1
2	Diversion Circle	10474100003	1
3	Cabinet	012022000003P03	1
4	Handle	2690410001603	2
5	Front Side Plate	012050000007P03	1
6	Axial Flow Fan	1043410000801	1
7	Brushless DC Motor	150104060013	1
8	Chassis Sub-Assy	01700006008907P	1
9	Motor Support Sub-Assy	01701206003901	1
10	Cut off Valve	071302391	1
11	Drainage hole Cap	76715005	3
12	Drainage Joint	26113009	1
13	Compressor and Fittings	009001060125	1
14	Strainer	0721004501	2
15	Accumulator	035029000003	1
16	Electromagnetic Valve	43003091	1
17	Magnet Coil (electromagnetic valve)	43040004114	1
18	Strainer	0721304401	1
19	Cut off Valve	07330000001	1
20	Silencer	07245012	1
21	Rear Side Plate	012076000021P03	1
22	Electronic Expansion Valve	43005017	1
23	Electric Expand Valve Fitting	4300034404	1
24	Pressure Protect Switch	4602000603	1
25	Pressure Sensor	43004400001501	1
26	4-way Valve	4300008201	1
27	Filter	07224803	1
28	Filter	07216221	2
29	One Way Valve	07133618	1
30	Electronic Expansion Valve	43005017	1
31	Electric Expand Valve Fitting	07200206002313	1

FEXX60HP230V1AO

32	Condenser Assy	01100206019001	1
33	Rear Grill	0157410001402	1
34	Gas-liquid Separator	07223048	1
35	Inductance	43128000014	1
36	Electric Box Assy	100002065509	1
37	Coping	01264100052P03	1
38	Drive Board	300027060524	1
39	Main Board	300027060636	1
40	PFC Inductance	43120011	1
41	Terminal Board 6 pin	4201025504	1
42	Terminal Board 3 pin	422000000015	1
43	Filter Board	300020060028	1
44	Power Switch	300012060016	1
45	Radiator	430034000048	1
46	Electrical Heater (Chassis)	7651000425	1
47	Electrical Heater(Compressor)	7651521238	1
48	Left Side Plate	012055000007P03	1
49	4 Way Valve Coil	43000400122	1
50	Temperature Sensor Red	3900007208	1
51	Temperature Sensor White	3900800004905G	1



U.S. CONTACT INFORMATION TRADEWINDS, LLC

E-mail: info@twclimate.com

Contractor Support: 888-850-7928 | Mon-Fri 8 AM - 5 PM EDT

GREECOMFORT.COM