



Parts Manual

FLOOR / CEILING B Series

MODELS:

FLR09HP230V1BF
FLR12HP230V1BF
FLR18HP230V1BF
FLR24HP230V1BF

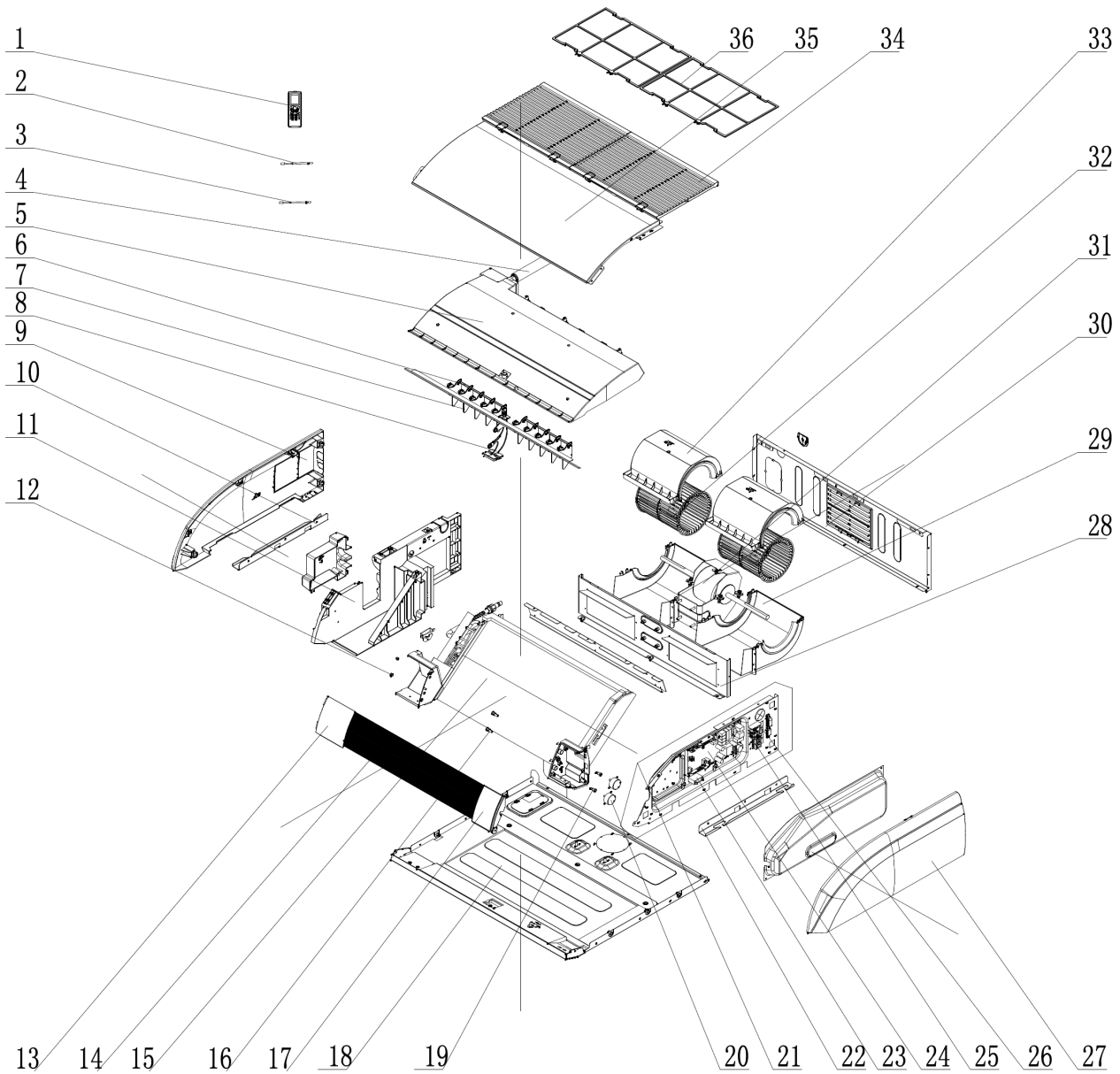
Thank you for choosing our product.
Please read this Installation & Owner's Manual carefully before operation and retain it for future reference.

If you lose this Manual, please contact your local distributor visit www.greecomfort.com/resources now to download an file the electronic version.



FLR09HP230V1BF

EXPLODED VIEW



FLR09HP230V1BF

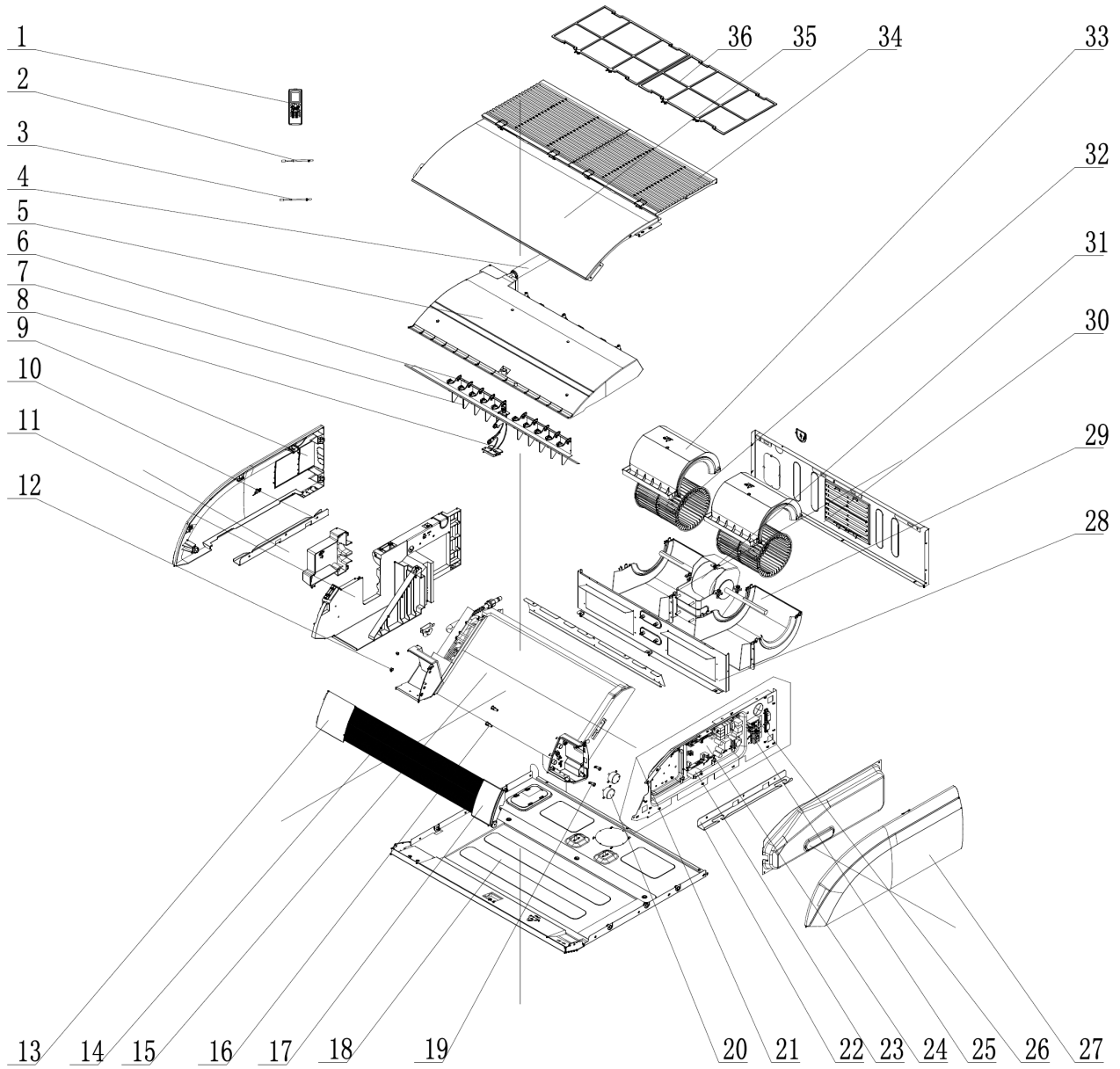


NO.	Part Description	Qty	Part Code
1	Remote Controller	1	30510599
2	Temperature Sensor	1	390001923
3	Room Sensor	1	39000191
4	Drainage Pipe Sub-Assy	1	05235434
5	Water Tray Assy	1	000069000066
6	Swing Lever	2	10582009
7	Air Louver	10	200007000001
8	Supporter	1	26909400076
9	Right Cover	1	26909400071
10	Installation Supporting Frame	1	01809402
11	Right Side Plate	1	26909400074
12	Axile Bush	2	10542704
13	Front Panel	1	200003000001
14	Guide Louver	2	200004000046
15	Evaporator Assy	1	011001060234
16	Rotating Shaft	2	26909430
17	Display Board	1	30294000009
18	Base Plate Assy	1	011007000032
19	Crankshaft	2	200023000001
20	Stepping Motor	2	1521240206
21	Electric Box Assy	1	100002066177
22	Installation Supporting Frame	1	01809401
23	Capacitor CBB61	1	3301074716
24	Main Board	1	300002060140
25	Terminal Board	0	none
26	Terminal Board	1	420001000002
27	Left Cover	1	26909400070
28	Clapboard Sub-Assy	1	017021000088
29	Propeller Housing (Lower)	2	200230000001
30	Rear Side Plate Sub-Assy	1	017051000046
31	Fan Motor	1	1570940901
32	Centrifugal Fan	2	103003000001
33	Propeller Housing (Upper)	2	200230000002
34	Front Grill	2	200226000004
35	Top Cover	1	012148000046P
36	Filter Sub-Assy (Rear Side Plate)	1	111001000001



FLR12HP230V1BF

EXPLODED VIEW



FLR12HP230V1BF

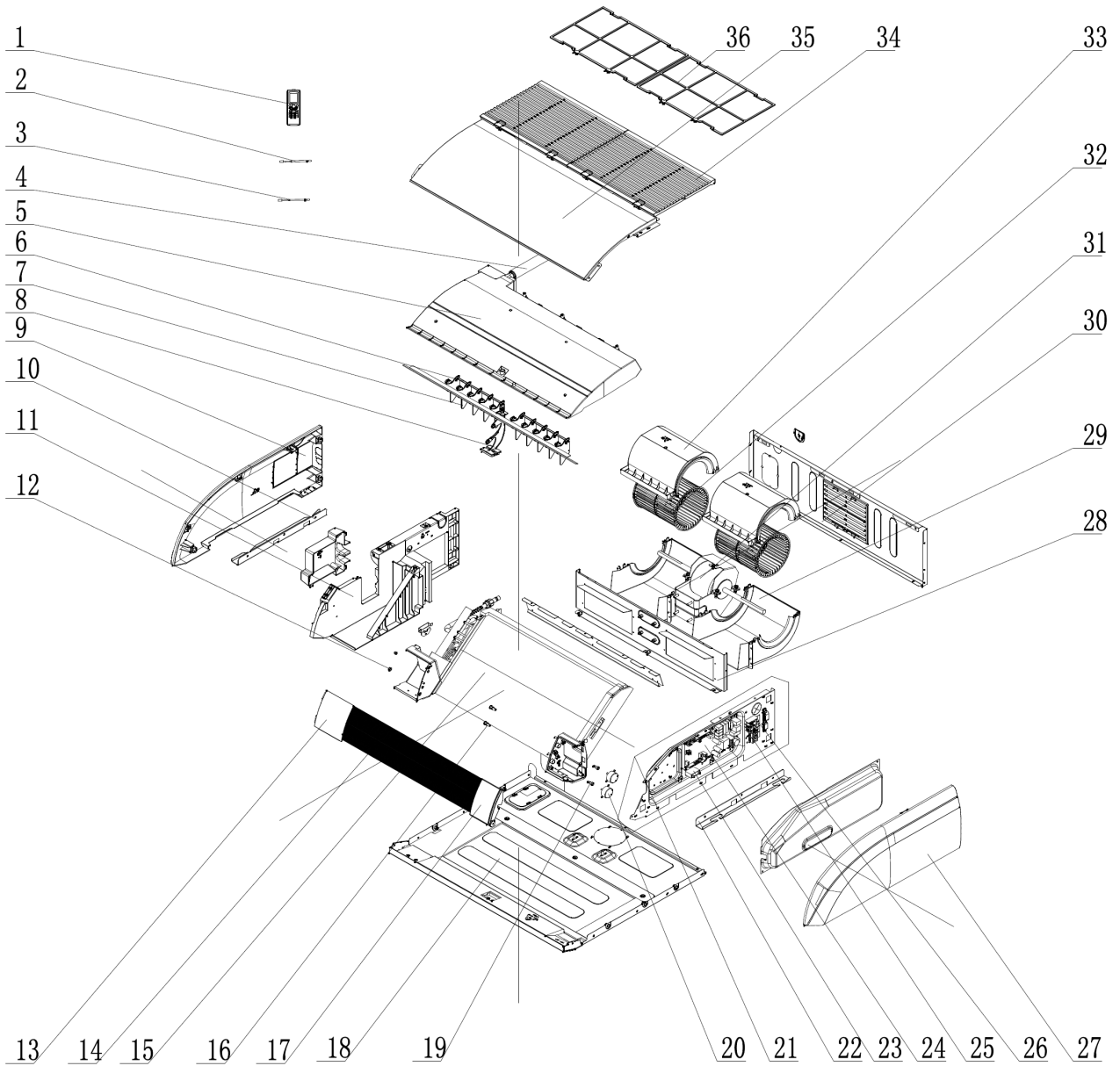


NO.	Part Description	Qty	Part Code
1	Remote Controller	1	30510599
2	Temperature Sensor	1	390001923
3	Room Sensor	1	39000191
4	Drainage Pipe Sub-Assy	1	05235434
5	Water Tray Assy	1	000069000066
6	Swing Lever	2	10582009
7	Air Louver	10	200007000001
8	Supporter	1	26909400076
9	Right Cover	1	26909400071
10	Installation Supporting Frame	1	01809402
11	Right Side Plate	1	26909400074
12	Axile Bush	2	10542704
13	Front Panel	1	200003000001
14	Guide Louver	2	200004000046
15	Evaporator Assy	1	011001000391
16	Rotating Shaft	2	26909430
17	Display Board	1	30294000009
18	Base Plate Assy	1	011007000032
19	Crankshaft	2	200023000001
20	Stepping Motor	2	1521240206
21	Electric Box Assy	1	100002066178
22	Installation Supporting Frame	1	01809401
23	Capacitor CBB61	1	3301074716
24	Main Board	1	300002060140
25	Terminal Board	0	none
26	Terminal Board	1	420001000002
27	Left Cover	1	26909400070
28	Clapboard Sub-Assy	1	017021000088
29	Propeller Housing (Lower)	2	200230000001
30	Rear Side Plate Sub-Assy	1	017051000046
31	Fan Motor	1	1570940901
32	Centrifugal Fan	2	103003000001
33	Propeller Housing (Upper)	2	200230000002
34	Front Grill	2	200226000004
35	Top Cover	1	012148000046P
36	Filter Sub-Assy (Rear Side Plate)	1	111001000001



FLR18HP230V1BF

EXPLODED VIEW





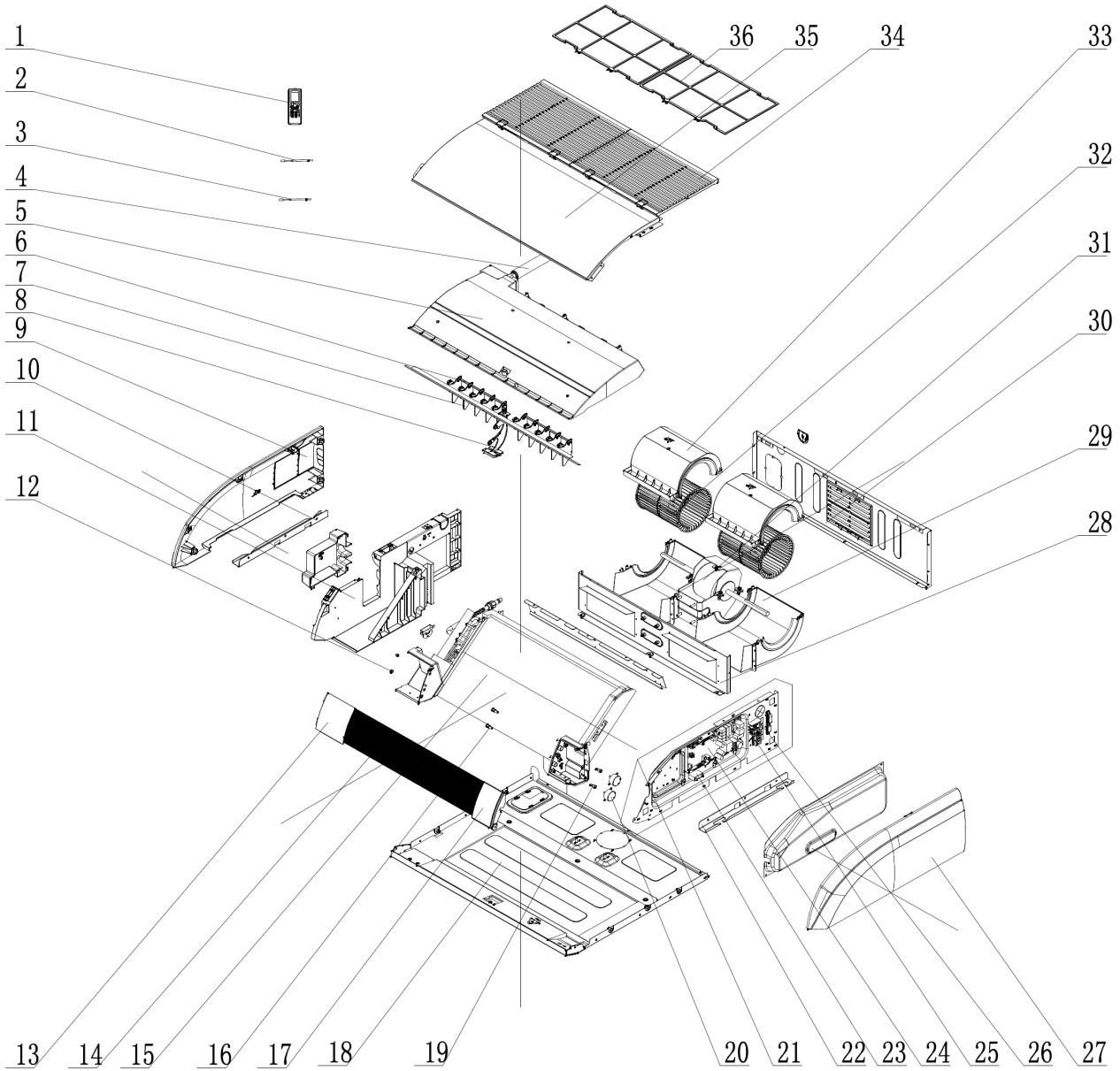
FLR18HP230V1BF

NO.	Part Description	Qty	Part Code
1	Remote Controller YAP1FFB	1	30510599
2	Temperature Sensor	1	390001923
3	Room Sensor	1	39000191
4	Drainage Pipe Sub-Assy	1	05235434
5	Water Tray Assy	1	000069000066
6	Swing Lever	2	10582009
7	Air Louver	10	200007000001
8	Supporter	1	26909400076
9	Right Cover	1	26909400071
10	Installation Supporting Frame	1	01809402
11	Right Side Plate	1	26909400074
12	Axile Bush	2	10542704
13	Front Panel	1	200003000001
14	Guide Louver	2	200004000046
15	Evaporator Assy	1	011001000391
16	Rotating Shaft	2	26909430
17	Display Board	1	30294000009
18	Base Plate Assy	1	011007000032
19	Crankshaft	2	200023000001
20	Stepping Motor	2	1521240206
21	Electric Box Assy	1	100002066178
22	Installation Supporting Frame	1	01809401
23	Capacitor CBB61S	1	3301074716
24	Main Board	1	300002060140
25	Terminal Board	0	none
26	Terminal Board	1	420001000002
27	Left Cover	1	26909400070
28	Clapboard Sub-Assy	1	017021000088
29	Propeller Housing (Lower)	2	200230000001
30	Rear side panel assembly	1	017051000046
31	Fan Motor FN20T	1	1570940901
32	Centrifugal Fan	2	103003000001
33	Propeller Housing (Upper)	2	200230000002
34	Front Grill	2	200226000004

FLR24HP230V1BF



EXPLODED VIEW



FLR24HP230V1BF



NO.	Part Description	Qty	Part Code
1	Remote Controller YAP1FFB	1	30510599
2	Temperature Sensor	1	3900019204
3	Room Sensor	1	39000191
4	Drainage Pipe Sub-Assy	1	05235434
5	Water Tray Assy	1	01289400017
6	Swing Lever	3	10582009
7	Air Louver	15	200007000001
8	Supporter	2	26909400076
9	Right Cover	1	26909400071
10	Installation Supporting Frame	1	01809402
11	Right Side Plate	1	26909400074
12	Axile Bush	2	10542704
13	Front Panel	1	200003000001
14	Guide Louver	2	200004500422
15	Evaporator Assy	1	011001060078
16	Rotating Shaft	4	26909430
17	Display Board	1	30294000009
18	Base Plate Assy	1	02229400036
19	Crankshaft	2	200023000001
20	Stepping Motor	2	1521240206
21	Electric Box Assy	1	100002066176
22	Installation Supporting Frame	1	01809401
23	Capacitor CBB61S	1	3301074702
24	Main Board	1	300002060140
25	Terminal Board	0	none
26	Terminal Board	1	420001000002
27	Left Cover	1	26909400070
28	Clapboard Sub-Assy	1	01249400018
29	Propeller Housing (Lower)	3	200230000001
30	Rear side panel assembly	1	017051000005
31	Fan Motor FN20T	1	150101000102
32	Centrifugal Fan	3	103003000001
33	Propeller Housing (Upper)	3	200230000002
34	Front Grill	1	26909400072
35	Top Cover	1	01269400012P
36	Filter Sub-Assy (Rear Side Plate)	2	111001000001



U.S. CONTACT INFORMATION TRADEWINDS, LLC

E-mail: info@twclimate.com

Contractor Support: 888-850-7928 | Mon-Fri 8 AM - 5 PM EDT

www.greecomfort.com/system-documentation/

GREE ELECTRIC APPLIANCES, INC. OF ZHUHAI

Add: West Jinji RD, Qianshan, Zhuhai, Guangdong, China, 519070

Tel: (+86-756) 8522218

Fax: (+86-756) 8669426

E-mail: gree@gree.com.cn